

ALPHA EQUIPMENT COMPANY

Hardware - Section E - Index

Call us for central office, transmission, switching,
power equipment, framing, hardware and racks.

Please select the part number you wish to view.

This document may be used for reference and printed in whole or part.

DWG	DESCRIPTION	PAGE
A762500	HEX BOLT ¼-20 STEEL	2
A763700	HEX BOLT 3/8-16 STEEL	2
A720004	LAG SCREW ANCHOR 3/8 LONG	3
A769006	THREADED ROD 3/8-16 STEEL	3
A731000	LOCK WASHER SPLIT STEEL	4
A769007	THREADED ROD ½-13 STEEL	4
A769008	THREADED ROD 5/8-11 STEEL	5
A769001	THREADED STUD 3/8-16 STEEL	5
A742514	“J” BOLT ¼-20 X 1 3/4	6
A753724	“V” BOLT 3/8-16 X 3	6
A745125	SPANNER J BOLT ½-3 1/8	7
A745025	CLIP J BOLT ½-13 X 3 1/8	7
A785003	MISCELLANEOUS “J” & “V” BOLT PLATES	8
A912012	HANGER BRACKET CABLE RACK	8
A912011	HANGER BRACKET SLOTTED TYPE FOR CABLE RACK OR AUX FRAMING BAR	9
A781001	AUXILIARY FRAMING CLIP	9
A931000	WALL ANGLE DRILLED	10
A781021	AUXILIARY FRAMING CLIP CROSSOVER JUNCTION	10
A931003	AUXILIARY FRAMING ANGLE 2 X 2 X 3/16	11
A931008	AUXILIARY FRAMING ANGLE 3 X 3 X 1/4	11
A785003-5	J BOLT PLATE	12
A890002	GROUND BAR ASSEMBLY 20” WALL MOUNTED ISOLATED	12
A131019	GROUND BAR ASSEMBLY ISOLATED 19” RACK MOUNTED	13
A890023	GROUND BAR ASSEMBLY ISOLATED 23” RACK MOUNTED	13
A890027	GROUND BAR ASSEMBLY 23” ISOLATED	14
A140010	INSULATING STANDOFF MOLDED FIBERGLASS	14
A140004	CHANNEL INSULATOR 2 X 1 CHANNEL	15
A140005	INSULATOR CABLE RACK OR AUX FRAMING BAR	15
A140006	INSULATOR 2 X 9/16 CHANNEL	16
A762700	SCREW ¼-20 PAN HEAD NYLON	16
A762200	HEX BOLT ¼-20 NYLON	17
A782000	MISCELLANEOUS J BOLT ASSEMBLIES	17
		18

The ground bars listed in this section are just a few that we manufacture.

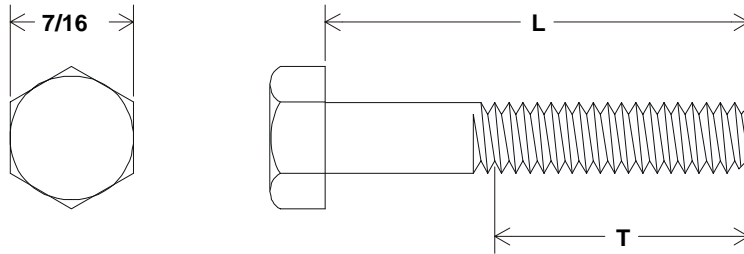
We can customize ground bars AND guarantee fair prices and short lead times.

Call us today.

This catalog is available on cd-rom by request.

HEX BOLT 1/4-20 STEEL

TABLE A



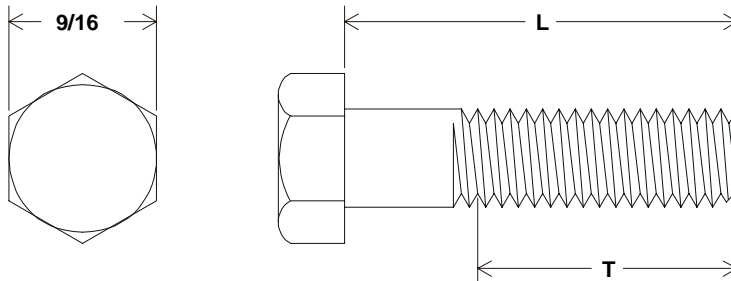
STEEL BOLT PLATED ZINC & YELLOW DICHROMATE

PART NUMBER	L	T
A7625 04	1/2	1/2
A7625 05	5/8	5/8
A7625 06	3/4	3/4
A7625 07	7/8	
A7625 08	1	
A7625 10	1 1/4	
A7625 12	1 1/2	
A7625 14	1 3/4	
A7625 16	2	
A7625 18	2 1/4	
A7625 20	2 1/2	
A7625 22	2 3/4	
A7625 24	3	
A7625 26	3 1/4	
A7625 28	3 1/2	
A7625 30	3 3/4	
A7625 32	4	
A7625 36	4 1/2	
A7625 40	5	
A7625 44	5 1/2	
A7625 48	6	1

DWG. A762500

HEX BOLT 3/8-16 STEEL

TABLE A

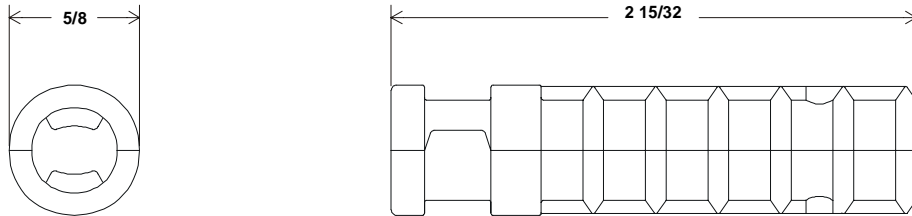


STEEL BOLT PLATED ZINC & YELLOW DICHROMATE

PART NUMBER	L	T
A7637 04	1/2	1/2
A7637 06	3/4	3/4
A7637 08	1	1
A7637 10	1 1/4	
A7637 12	1 1/2	
A7637 14	1 3/4	
A7637 16	2	
A7637 18	2 1/4	
A7637 20	2 1/2	
A7637 22	2 3/4	
A7637 24	3	
A7637 26	3 1/4	
A7637 28	3 1/2	
A7637 30	3 3/4	
A7637 32	4	
A7637 36	4 1/2	
A7637 40	5	
A7637 44	5 1/2	
A7637 48	6	1

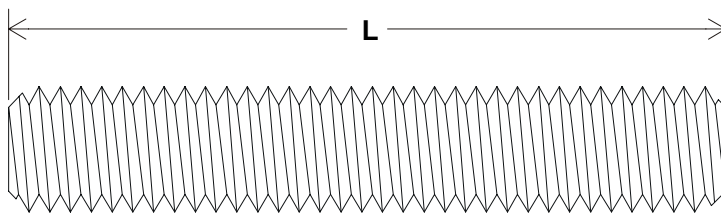
DWG. A763700

LAG SCREW ANCHOR 3/8 LONG



DWG. A720004

THREADED ROD 3/8-16 STEEL



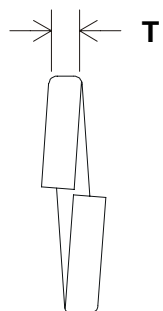
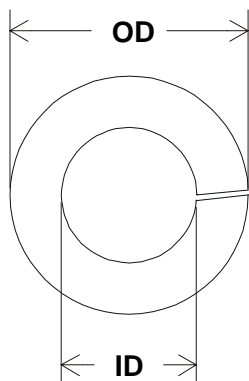
STEEL ROD PLATED ZINC
& YELLOW DICHROMATE

TABLE A

PART NUMBER	L
A769006- 4.5	4 1/2
6	6
6.5	6 1/2
12	12
18	18
24	24
30	30
36	36
42	42
48	48
54	54
60	60
72	72

DWG. A769006

LOCK WASHER SPLIT STEEL



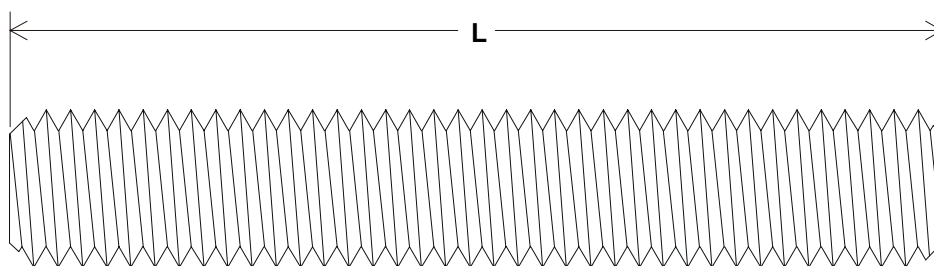
STEEL WASHER PLATED ZINC & YELLOW DICHROMATE

TABLE A

PART NUMBER	NOM. SIZE	ID	OD	T
A7310 04	#4	0.118	0.209	0.025
A7310 06	#6	0.145	0.250	0.031
A7310 08	#8	0.171	0.293	0.040
A7310 10	#10	0.198	0.334	0.047
A7310 12	#12	0.225	0.377	0.056
A7310 25	1/4	0.259	0.489	0.062
A7310 31	5/16	0.323	0.586	0.078
A7310 37	3/8	0.387	0.683	0.094
A7310 50	1/2	0.516	0.873	0.125
A7310 62	5/8	0.644	1.079	0.156

DWG. A731000

THREADED ROD 1/2-13 STEEL



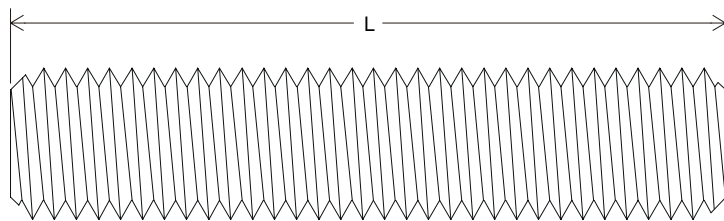
STEEL ROD PLATED ZINC & YELLOW DICHROMATE

TABLE A

PART NUMBER	L
A769007- 6	6
12	12
18	18
24	24
30	30
36	36
42	42
48	48
54	54
60	60
72	72

DWG. A769007

THREADED ROD 5/8-11 STEEL



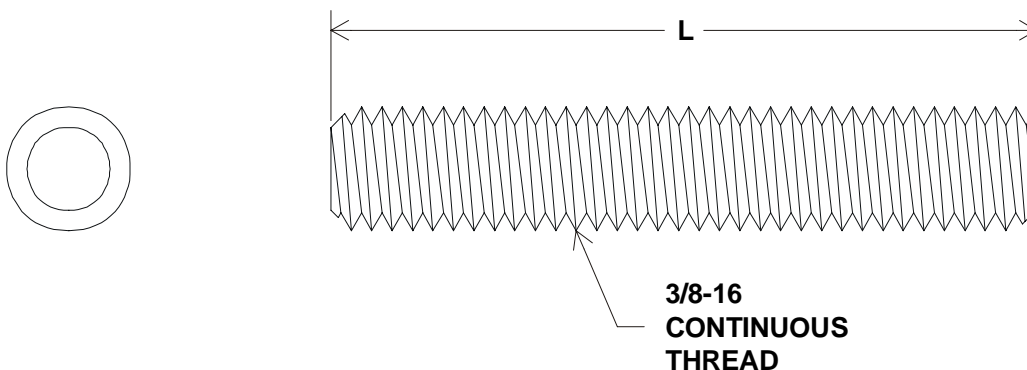
STEEL ROD PLATED ZINC & YELLOW DICHROMATE

TABLE A

PART NUMBER	L	AE PART NUMBER
A769008- 6	6	
7	7	H-23296- 7
9	9	29
11	11	9
12	12	
13	13	59
17	17	8
18	18	
21	21	1
24	24	22
30	30	110
36	36	80
42	42	
48	48	53
54	54	
60	60	111
72	72	63
84	84	65
96	96	131
120	120	134

DWG. A769008

THREADED STUD 3/8-16 STEEL



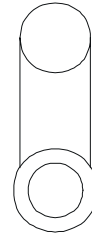
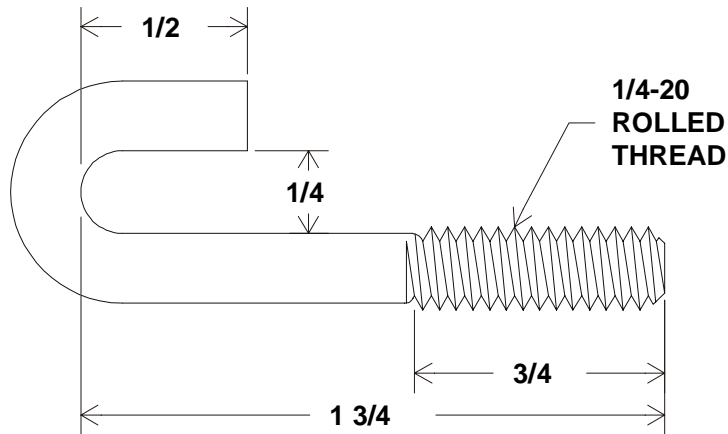
STEEL STUD PLATED ZINC & YELLOW DICHROMATE

TABLE A

PART NUMBER	L
A769001- 20	2 1/2
22	2 3/4
24	3
26	3 1/4
28	3 1/2
30	3 3/4
32	4

DWG. A769001

"J" BOLT 1/4-20 X 1 3/4

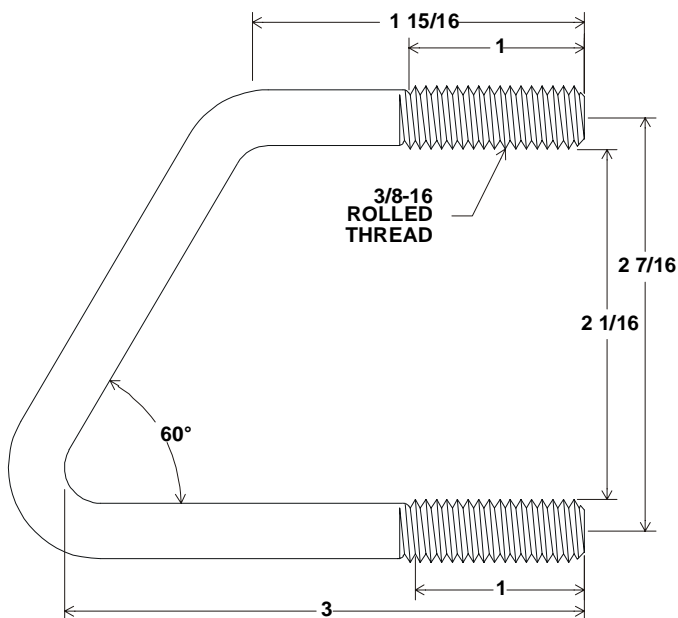


NOTES:

1. MATERIAL: A36 THREAD ROLLING STOCK 0.21 DIA.
2. FINISH: PLATE ZINC & YELLOW DICHROMATE
3. TOLERANCE: $\pm 1/16$

DWG. A742514

"V" BOLT 3/8-16 X 3

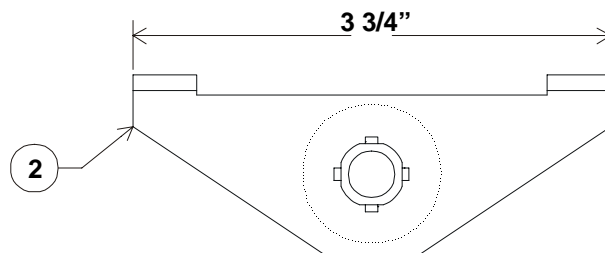
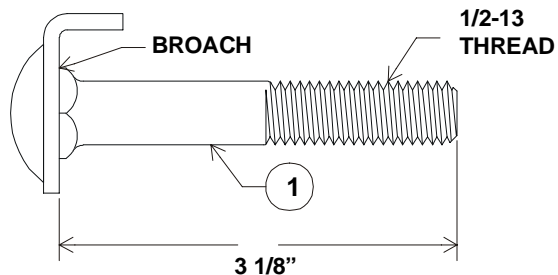


NOTES:

1. MATERIAL: 0.328 DIA STEEL THREAD ROLLING WIRE
2. FINISH: PLATE ZINC & YELLOW DICHROMATE
3. TOLERANCE: $\pm 1/16$

DWG. A753724

SPANNER J BOLT 1/2-13 X 3 1/8



NOTES:

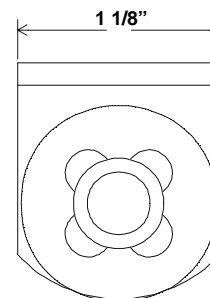
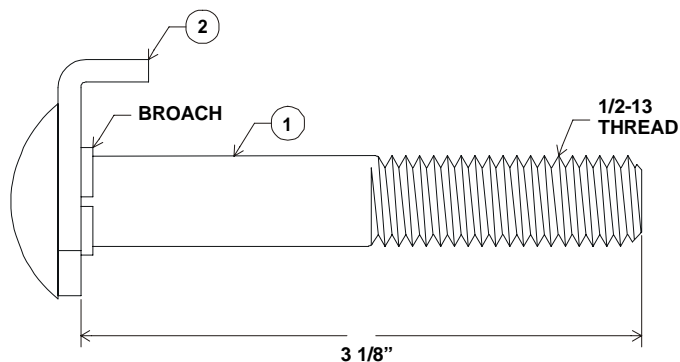
1. ASSEMBLE AND BROACH AS SHOWN
2. FINISH: PLATE ZINC & YELLOW DICHROMATE

STOCK LIST

ITEM	QTY	PART NUMBER	DESCRIPTION
1	1	A768524	BOLT 1/2-13 X 3 CRG HD
2	1	A748002	SPANNER CLIP

DWG. A745125

CLIP J BOLT 1/2-13 X 3 1/8



NOTES:

1. ASSEMBLE AND BROACH AS SHOWN
2. FINISH: PLATE ZINC & YELLOW DICHROMATE

STOCK LIST

ITEM	QTY	PART NUMBER	DESCRIPTION
1	1	A768524	BOLT 1/2-13 X 3 CRG HD
2	1	A748001	CLIP

DWG. A745025

MISCELLANEOUS "J" & "V" BOLT PLATES

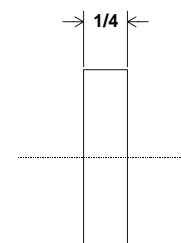
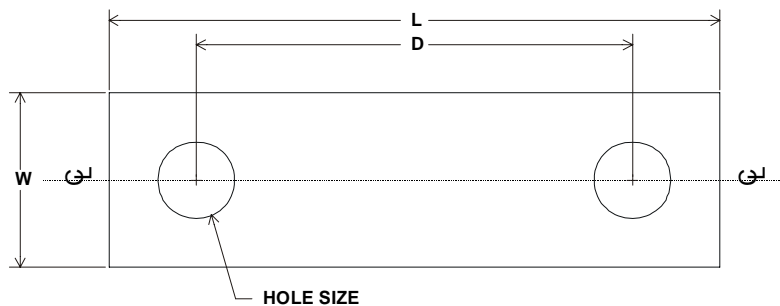
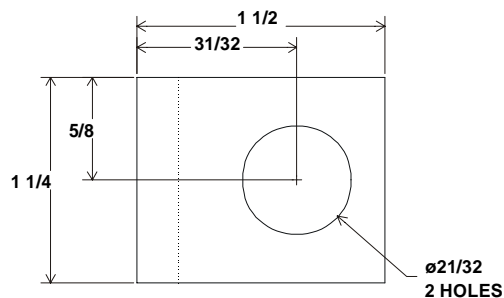


TABLE A

PART NUMBER	D	HOLE SIZE	L	W
A785003- 1	2 7/16	11/32	3 1/2	1
2	2 7/16	7/16	3 1/2	1
3	2 21/32	9/32	3 1/2	1
4	2 11/16	11/16	4 1/2	1 1/2
5	4 3/8	3/8	5 1/8	1
6	2 9/16	3/8	3 1/2	1
7	2 5/8	9/16	3 7/8	1 1/4
8	2 3/8	9/32	3 1/8	1
9	4 3/4	9/32	5 1/2	1

SEE INDIVIDUAL MFG DRAWINGS FOR DIMENSIONS, FINISH & TOLERANCES.

DWG. A785003



HANGER BRACKET CABLE RACK

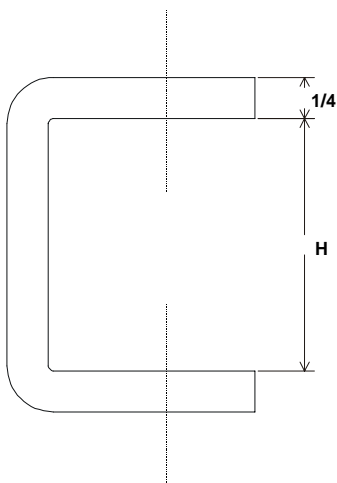


TABLE A

PART NUMBER	H
A912012- 1	1 17/32
A912012- 2	2 1/32

DWG. A912012

HANGER BRACKET SLOTTED TYPE FOR CABLE RACK OR AUX FRAMING BAR

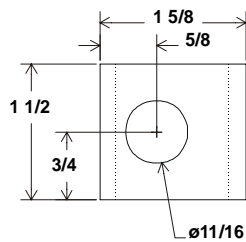
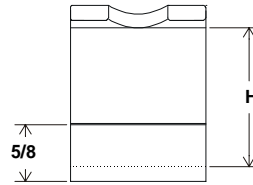
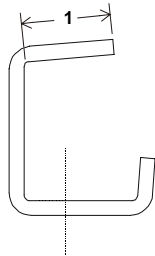
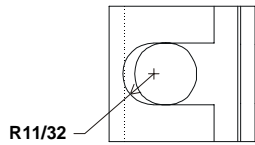
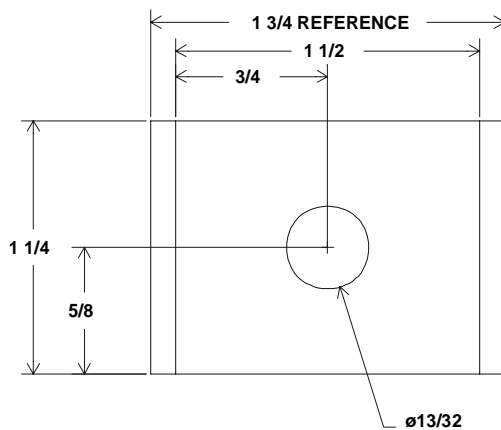
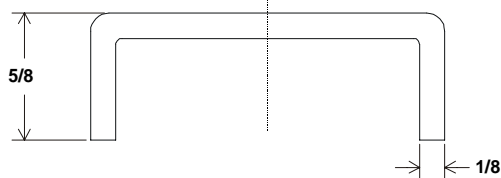


TABLE A

PART NUMBER	H
A912011-1	1 17/32
A912011-2	2 1/32

DWG. A912011

AUXILIARY FRAMING CLIP

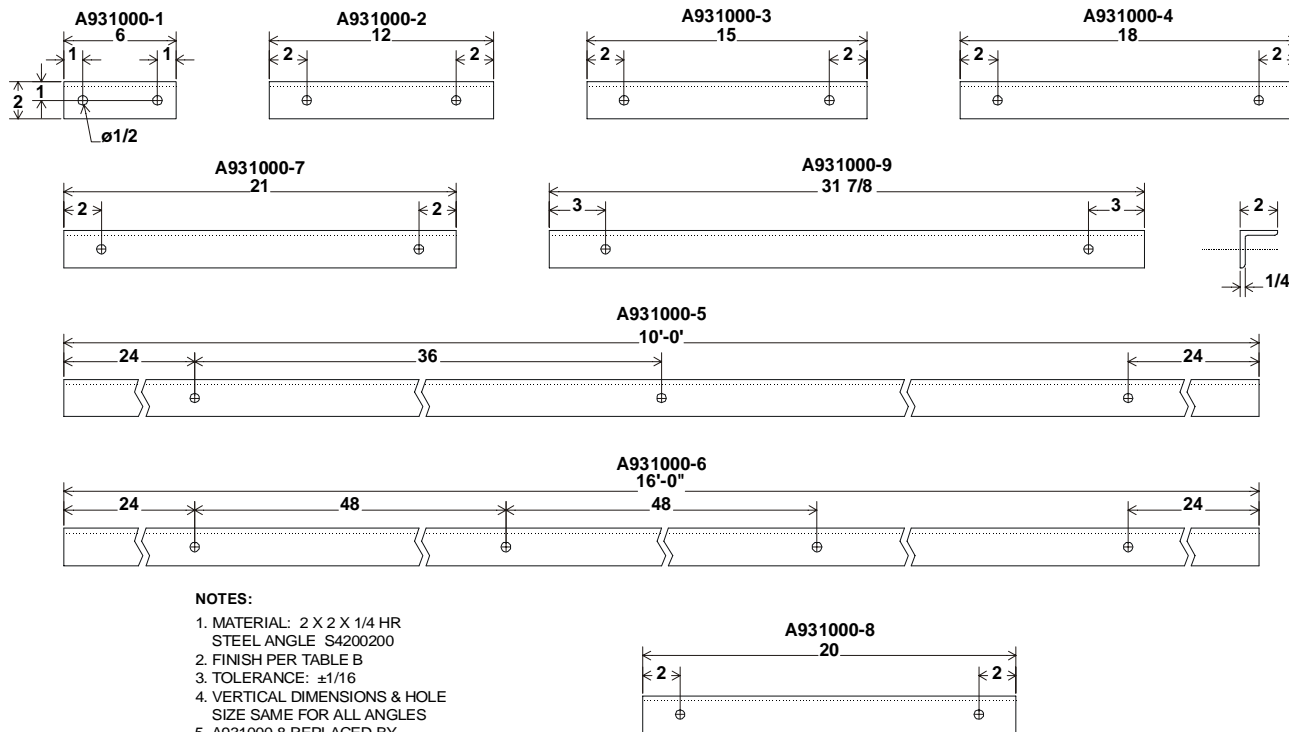


NOTES:

1. MATERIAL: 1/8 X 1 1/4 HR STEEL STRIP
S012125 0.146 LBS
2. FINISH: PLATE ZINC & YELLOW DICHROMATE
3. TOLERANCE: $\pm 1/32$

DWG. A781001

WALL ANGLE DRILLED

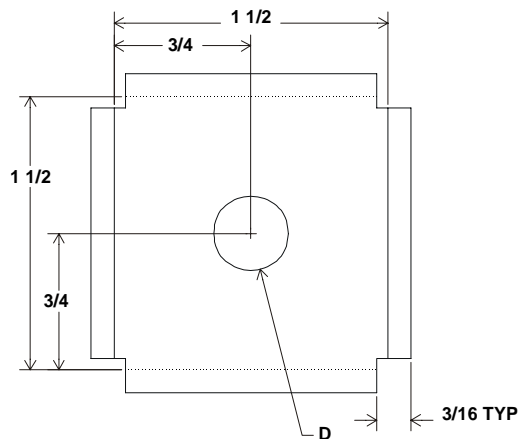


NOTES:

1. MATERIAL: 2 X 2 X 1/4 HR STEEL ANGLE S4200200
2. FINISH PER TABLE B
3. TOLERANCE: $\pm 1/16$
4. VERTICAL DIMENSIONS & HOLE SIZE SAME FOR ALL ANGLES
5. A931000-8 REPLACED BY A931504

DWG. A931000

AUXILIARY FRAMING CLIP CROSSOVER JUNCTION



NOTES:

1. MATERIAL: 1/8 X 2 1/2 HR STEEL STRIP S012250
2. FINISH: PLATE ZINC & YELLOW DICHROMATE
3. TOLERANCE: $\pm 1/32$ UNLESS OTHERWISE SPECIFIED

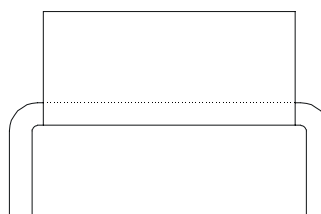
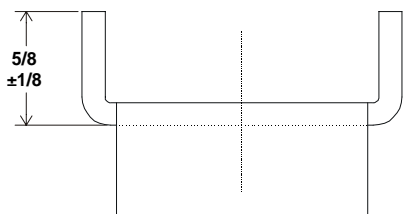


TABLE A

PART NUMBER	D
A78102 1	13/32
A78102 2	17/32
A78102 3	21/32

DWG. A781021

AUXILIARY FRAMING ANGLE 2 X 2 X 3/16

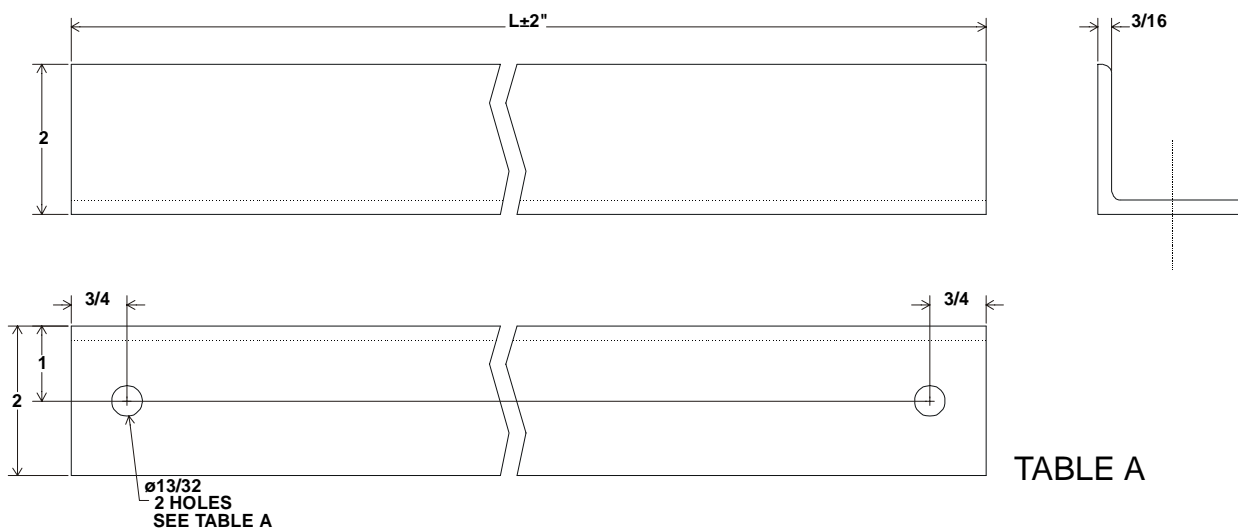


TABLE A

NOTES:

1. MATERIAL: 2 X 2 X 3/16 HR STEEL ANGLE S3200200
2. FINISH PER TABLE B
3. TOLERANCE: ±1/16 UNLESS OTHERWISE SPECIFIED

PART NUMBER	L	PART NUMBER	L	HOLES
A931003- 2	2'	A931003- 14	14'	
4	4'	16	16'	
6	6'	18	18'	
8	8'	20	20'	
10	10'	10A	10'	2
12	12'	20A	20'	2

DWG. A931003

AUXILIARY FRAMING ANGLE 3 X 3 X 1/4

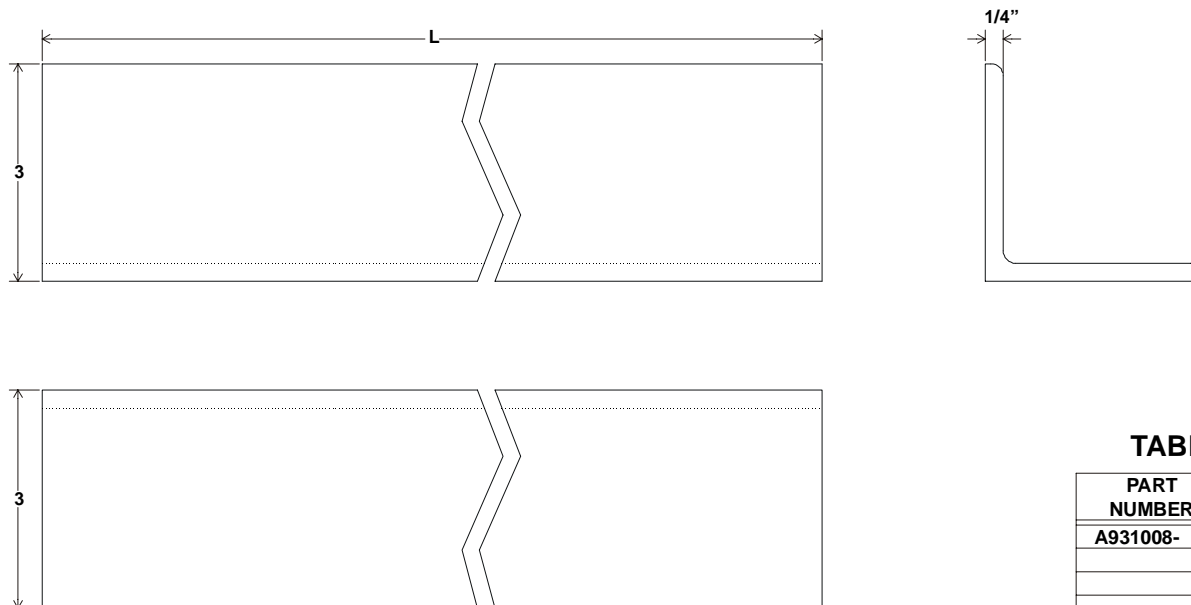


TABLE A

NOTES:

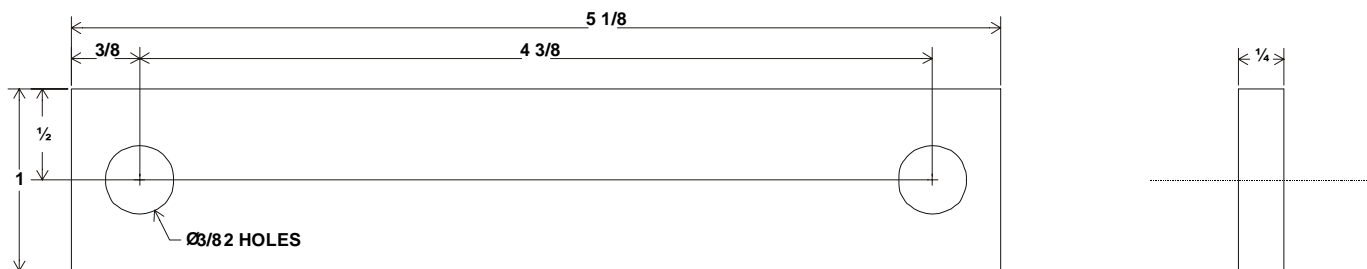
1. MATERIAL: 3 X 3 X 1/4 HR STEEL ANGLE S4300300
2. FINISH PER TABLE B
3. TOLERANCE: ±1/4"

WEIGHT: 4.9 LBS/FT

PART NUMBER	L
A931008- 2	2'
4	4'
6	6'
8	8'
10	10'
12	12'
14	14'
16	16'
18	18'
20	20'

DWG. A931008

J BOLT PLATE

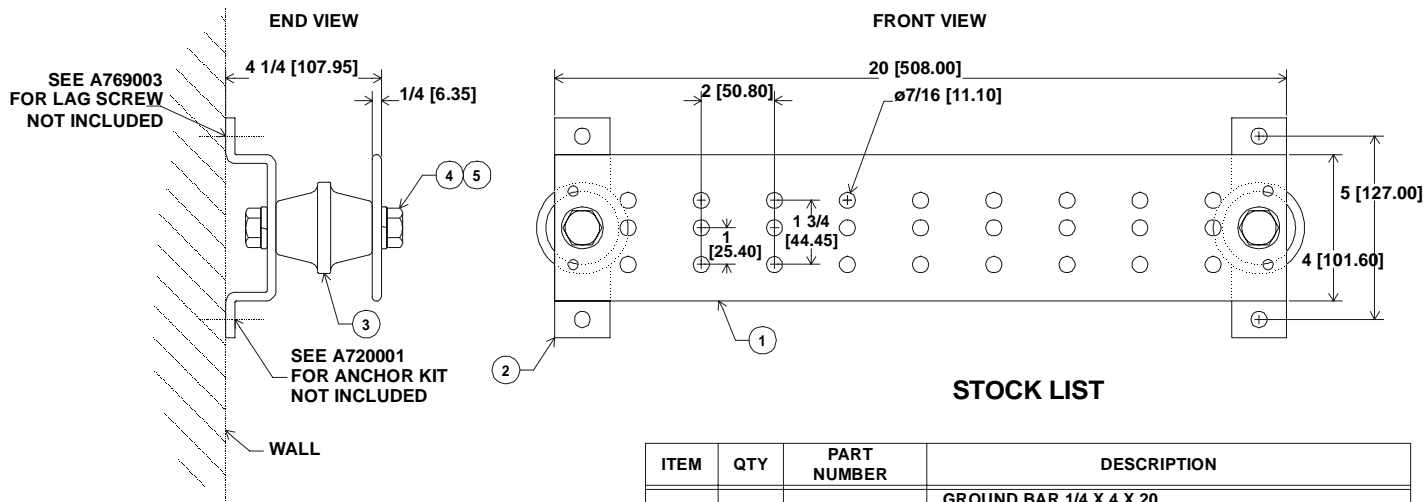


NOTES:

1. MATERIAL: 1/4 X 1 HR STEEL BAR S025100
2. FINISH: PLATE ZINC & YELLOW DICHROMATE
3. TOLERANCE: ±1/16

DWG. A785003-5

GROUND BAR ASSEMBLY 20" WALL MOUNTED ISOLATED



STOCK LIST

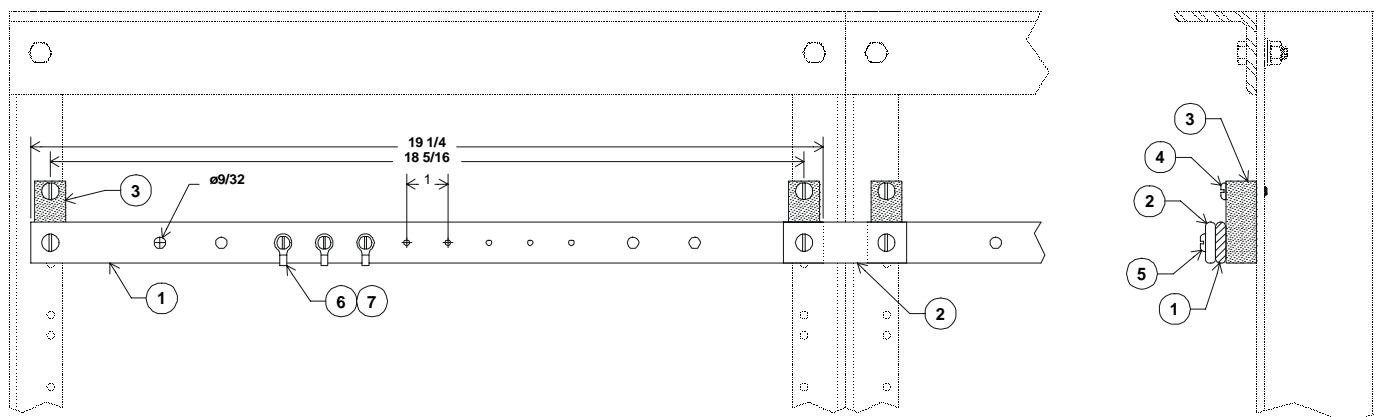
ITEM	QTY	PART NUMBER	DESCRIPTION
1	1	A130036	GROUND BAR 1/4 X 4 X 20 COPPER ALLOY 110 PER ASTM B187
2	2	A130046-2	WALL MOUNTING BRACKET ASTM A36 STEEL PLATED ZINC & YELLOW DICHROMATE
3	2	A140009-62	STANDOFF INSULATOR MOLDED FIBERGLASS WITH STEEL 5/8-11 THREADED INSERTS RATED UL 94V-0 FILE E81713
4	4	A766208	GRADE 2 STEEL BOLT 5/8-11 X 1 HH PLATED ZINC & YELLOW DICHROMATE
5	4	A731062	STEEL SPILT LOCK WASHER 5/8 PLATED ZINC & YELLOW DICHROMATE

DIMENSIONS ARE IN INCHES AND
[] MILLIMETERS

WEIGHT:
10.11 LBS

DWG. A890002

GROUND BAR ASSEMBLY ISOLATED 19" RACK MOUNTED

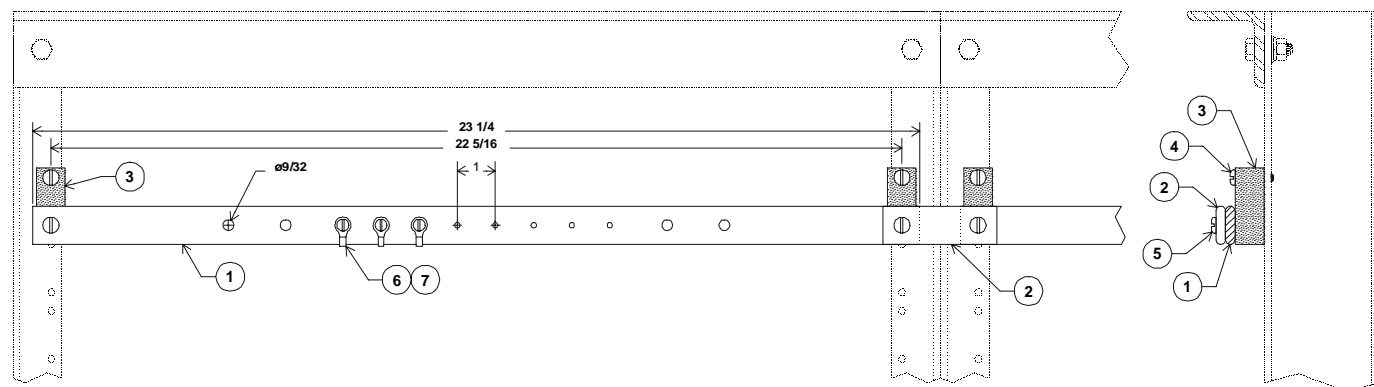


STOCK LIST

ITEM	QTY	PART NUMBER	DESCRIPTION
1	1	A130042-19	GROUND BAR
2	1	A130042-2	SPLICE BAR
3	2	A145026	INSULATOR
4	2	A761208	SCREW 12-24 X 1 PH SS
5	2	A761206	SCREW 12-24 X 3/4 PH SS
6	8	A769013-3	SCREW 8-32 X 3/8 PH SS
7	8	A130047-4	TERMINAL LUG

DWG. A131019

GROUND BAR ASSEMBLY ISOLATED 23" RACK MOUNTED

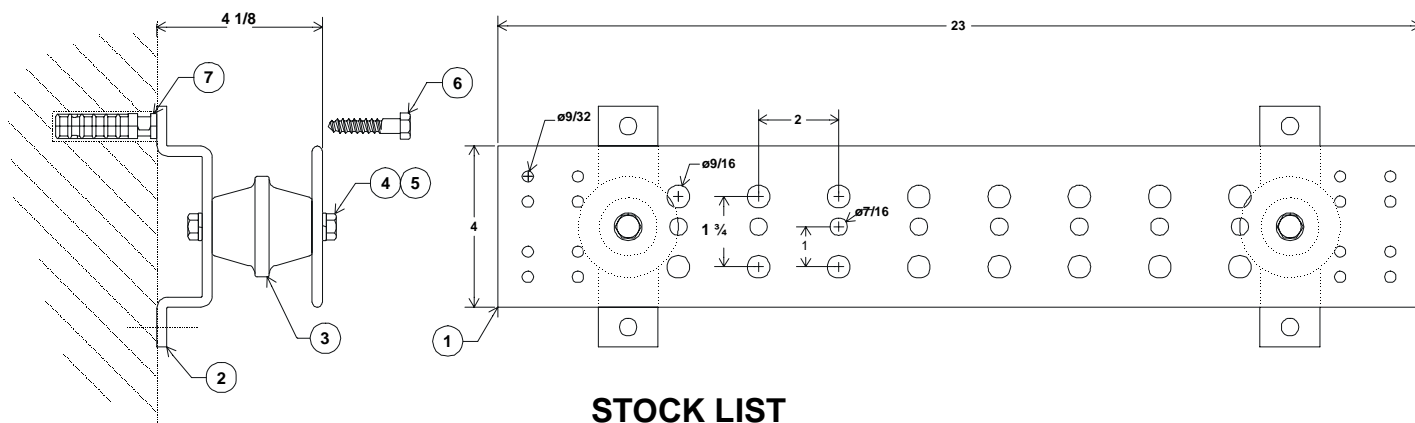


STOCK LIST

ITEM	QTY	PART NUMBER	DESCRIPTION
1	1	A130042-23	GROUND BAR
2	1	A130042-2	SPLICE BAR
3	2	A145026	INSULATOR
4	2	A761208	SCREW 12-24 X 1 PH SS
5	2	A761206	SCREW 12-24 X 3/4 PH SS
6	8	A769013-3	SCREW 8-32 X 3/8 PH SS
7	8	A130047-4	TERMINAL LUG

DWG. A890023

GROUND BAR ASSEMBLY 23" ISOLATED



STOCK LIST

ITEM	QTY	PART NUMBER	DESCRIPTION
1	1	A895033	GROUND BAR
2	2	A130046-3	WALL MOUNTING BRACKET
3	2	A140009-37	INSULATING STANDOFF
4	4	A763706	BOLT 3/8-16 X 3/4 HH
5	4	A731037	LOCK WASHER 3/8
6	4	A769003-16	LAG SCREW 3/8 X 2 HH
7	4	A720004	LAG SCREW ANCHOR

DWG. A890027

INSULATING STANDOFF MOLDED FIBERGLASS

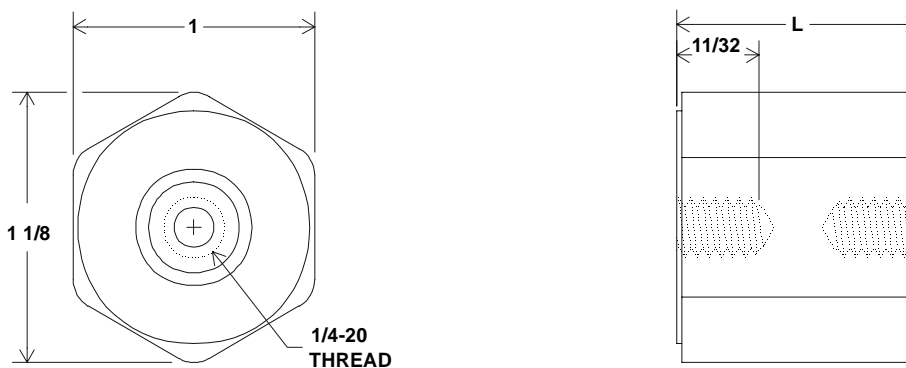


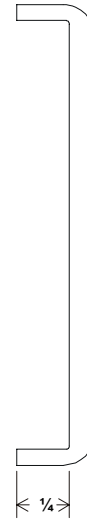
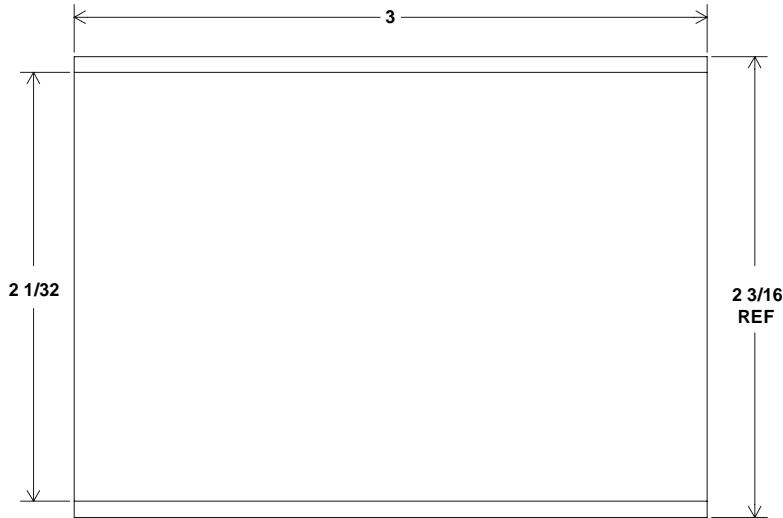
TABLE A

RED MOLDED FIBERGLASS INSULATOR
UL RATED 94V-0
(FILE E 23525)

PART NUMBER	L
A140010- 1	1
A140010- 2	1 1/4

DWG. A140010

CHANNEL INSULATOR 2 X 1 CHANNEL



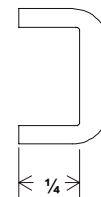
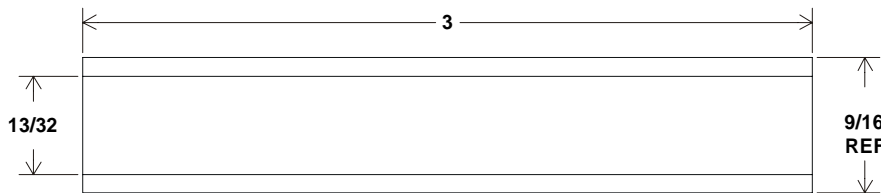
NOTES:

1. MATERIAL: 1/8 FLAME RETARDANT ABS
SHEET P1125000
2. FINISH: NONE
3. TOLERANCE: $\pm 1/32$

**MATERIAL IS RATED UL 94V-0
(UL E52355)**

DWG. A140004

INSULATOR CABLE RACK OR AUX FRAMING BAR



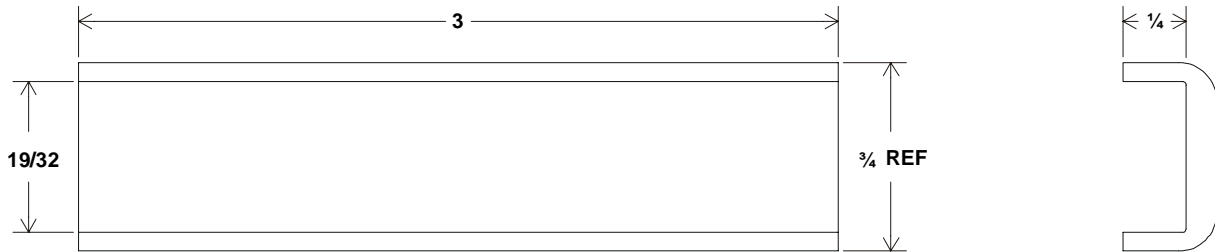
NOTES:

1. MATERIAL: 1/8 FLAME RETARDANT ABS
SHEET P1125000
2. FINISH: NONE
3. TOLERANCE: $\pm 1/32$

**MATERIAL IS RATED UL 94V-0
(UL E52355)**

DWG. A140005

INSULATOR 2 X 9/16 CHANNEL



NOTES:

1. MATERIAL: 1/8 FLAME RETARDANT ABS
SHEET P1125000
2. FINISH: NONE
3. TOLERANCE: $\pm 1/32$

**MATERIAL IS RATED UL 94V-0
(UL E52355)**

DWG. A140006

SCREW 1/4-20 PAN HEAD NYLON

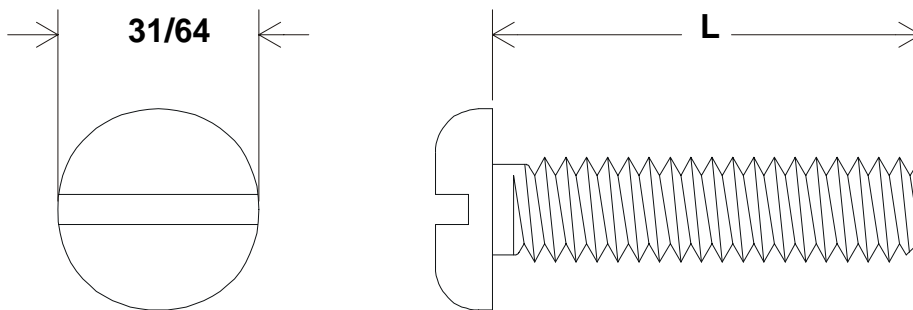


TABLE A

PART NUMBER	L
A7627 04	1/2
A7627 06	3/4
A7627 08	1
A7627 12	1 1/2
A7627 14	1 3/4
A7627 16	2

DWG. A762700

HEX BOLT 1/4-20 NYLON

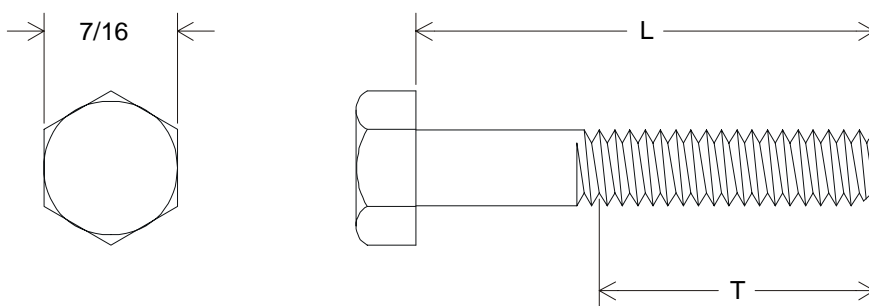
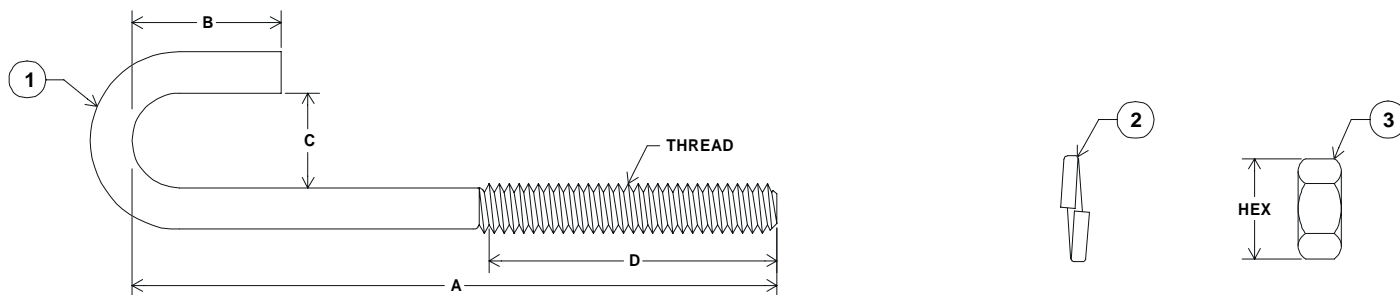


TABLE A

PART NUMBER	L	T
A7622 04	1/2	1/2
A7622 06	3/4	3/4
A7622 08	1	
A7622 10	1 1/4	
A7622 12	1 1/2	
A7622 16	2	

DWG. A762200

MISCELLANEOUS J BOLT ASSEMBLIES



STEEL PARTS PLATED ZINC & YELLOW DICHROMATE

STOCK LIST

ITEM	ASSEMBLY									PART NUMBER	DESCRIPTION
	1	2	3	4	5	6	7	8	9		
1	1									A74 2514	J BOLT 1/4-20 X 1 3/4
1		1								A74 2518	J BOLT 1/4-20 X 2 1/4
1			1							A74 2526	J BOLT 1/4-20 X 3 1/4
1				1						A74 3118	J BOLT 5/16-18 X 2 1/4
1					1					A74 3126	J BOLT 5/16-18 X 3 1/4
1						1				A74 3130	J BOLT 5/16-18 X 3 3/4
1							1			A74 3226	J BOLT 5/16-18 X 3 1/4
1								1		A74 3734	J BOLT 3/8-16 X 4 1/4
1									1	A742523	J BOLT 1/4-20 X 2 7/8
2	1	1	1						1	A7310 25	LOCK WASHER 1/4
2				1	1	1	1			A7310 31	LOCK WASHER 5/16
2								1		A7310 37	LOCK WASHER 3/8
3	1	1	1						1	A7700 25	NUT 1/4-20 HEX
3				1	1	1	1			A7700 31	NUT 5/16-18 HEX
3								1		A7700 37	NUT 3/8-16 HEX

TABLE A

PART NUMBER	A	B	C	D	THREAD	HEX	ASSY
A78200 1	1 3/4	1/2	1/4	3/4	1/4-20	7/16	1
A78200 2	2 1/4	3/4	7/16	1			2
A78200 3	3 1/4			1 1/2			3
A78200 4	2 1/4			1	5/16-18	1/2	4
A78200 5	3 1/4			3/4			5
A78200 6	3 3/4		5/16	1 1/4			6
A78200 7	3 1/4		5/16	1 1/2			7
A78200 8	4 1/4		1/2	1 1/4	3/8-16	9/16	8
A782009	2 7/8		7/16	1 1/4	1/4-20	7/16	9

DWG. A782000